

GN 165.1 | Connecting clamps with base

for linear actuators, aluminium



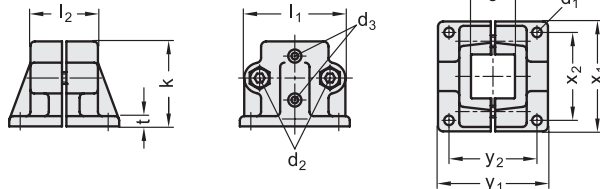
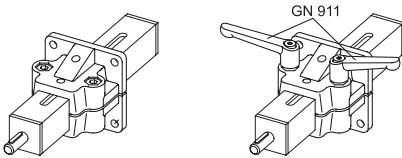
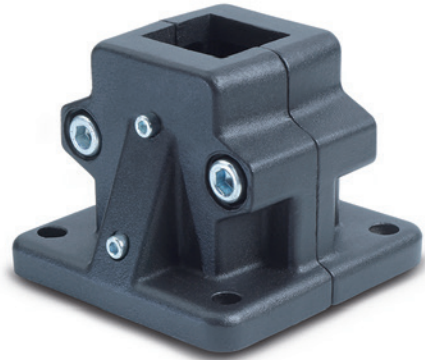
- 1
- 2
- 3
- 4
- 5
- 6
- 7
- 8
- 9
- 10
- 11
- 12
- 13
- 14
- 15
- 16
- 17
- 18

MATERIAL

Aluminium, epoxy resin coating, RAL 9005 black colour, matte finish.
AISI 304 stainless steel screws and nuts.
Connector nut in natural steel.

FEATURES AND APPLICATIONS

GN 165.1 bases for connecting clamps can normally be matched with square linear actuators GN 291.1 (see page 1376).
By clamping the guide hole s it is possible to adjust the actuator positioning and to lock the slider after having set up the final position.
The clamping screw d_2 may be replaced by clamping kits GN 911 (see page 1372).



Conversion Table	
1 mm = 0.039 inch	
s	
mm	inch
30	1.18
40	1.57
50	1.97

METRIC

Code	Description	s		d_2	d_3	k	l_1	l_2	t	x_1	x_2	y_1	y_2	d_3 Clamping kit	Δ
		d_1	Square hole												
GN.49406	GN 165.1-V30-2-SW	6.5	30	M8	M4	58	69	46	7	75	60	75	60	GN 911-M8-32	270
GN.49416	GN 165.1-V40-2-SW	11	40	M10	M5	91	98	70	14	115	90	119	90	GN 911-M10-55	920
GN.49426	GN 165.1-V50-2-SW	11	50	M10	M6	91	98	70	14	115	90	119	90	GN 911-M10-55	840

Connecting clamps